



STRUCTURE
and Organization

組織架構



資本額與股東結構

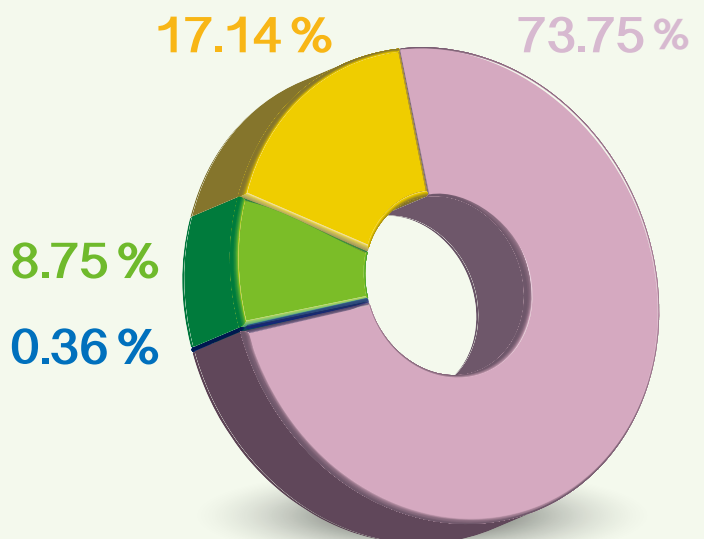
Capitalization and Ownership Structure

股東名稱 Shareholder	總投資金額 (元) Total Investment (NT\$)	百分比 (%) Percentage (%)
臺北市政府 Taipei City Government	6,898,247,860	73.75
交通部 Ministry of Transportation and Communications	1,603,560,000	17.14
新北市政府 New Taipei City Government	818,483,750	8.75
唐榮鐵工廠股份有限公司 Tang Eng Iron Works Co., Ltd.	33,407,500	0.36
兆豐國際商業銀行股份有限公司 Mega International Commercial Bank Co., Ltd.	133,630	
合作金庫商業銀行股份有限公司 Taiwan Cooperative Bank Co., Ltd.	133,630	
臺北富邦商業銀行股份有限公司 Taipei Fubon Commercial Bank Co., Ltd.	133,630	
合計 Total	9,354,100,000	100

資本結構圖

Capitalization Structure

- 臺北市政府
Taipei City Government
- 交通部
Ministry of Transportation and Communications
- 新北市政府
New Taipei City Government
- 唐榮鐵工廠股份有限公司
Tang Eng Iron Works Co., Ltd.
- 兆豐國際商業銀行股份有限公司
Mega International Commercial Bank Co., Ltd.
- 合作金庫商業銀行股份有限公司
Taiwan Cooperative Bank Co., Ltd.
- 臺北富邦商業銀行股份有限公司
Taipei Fubon Commercial Bank Co., Ltd.



董事會

Board of Directors

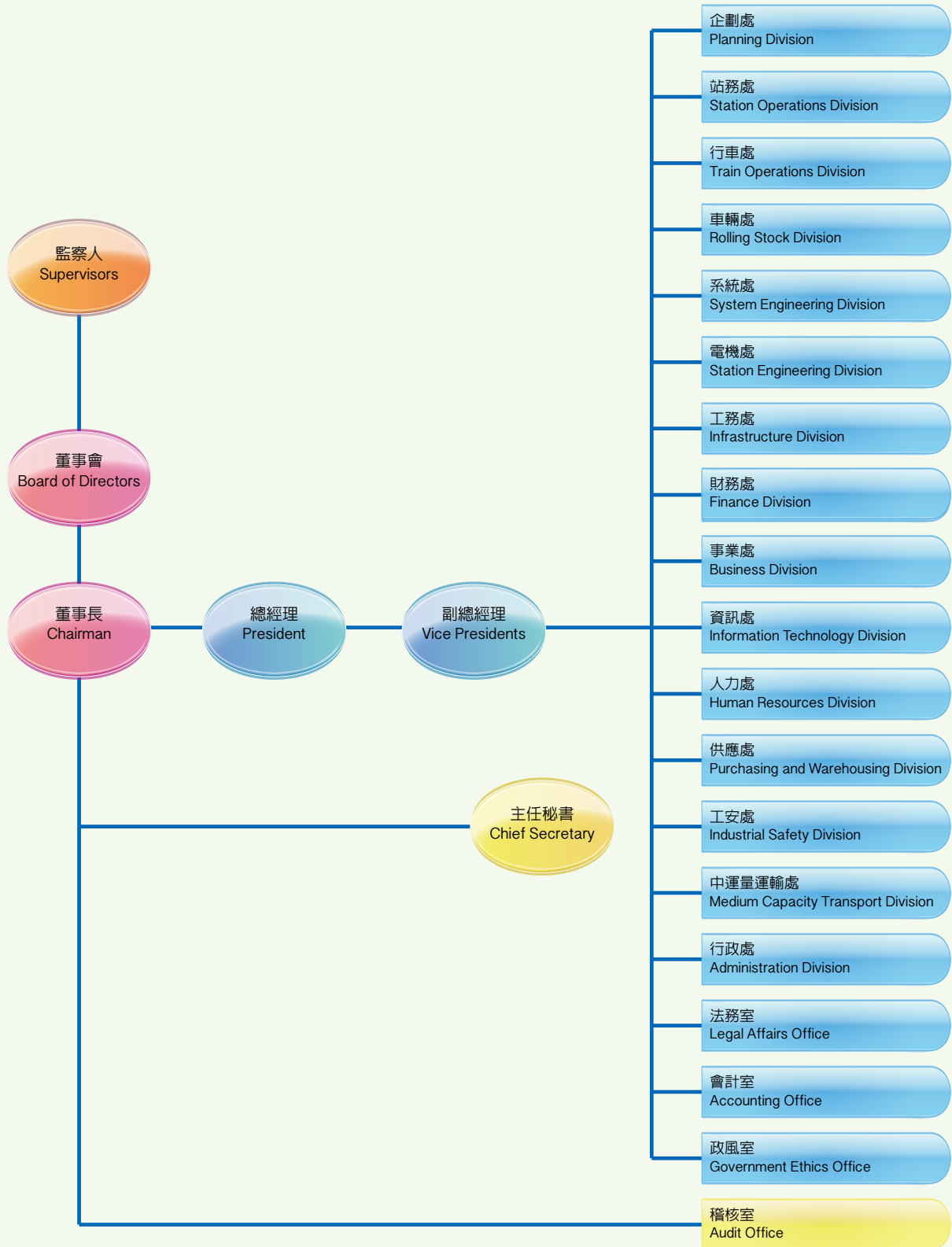
董事長 Chairman	楊錫安 Hsi-An Yang
常務董事 Standing Directors	李四川 (新北市政府副市長) Shu-Chuan Lee (Deputy Mayor of New Taipei City Government)
	吳盟分 (交通部公路總局局長) Men-Feng Wu (Director of Directorate General of Highways, Ministry of Transportation and Communications)
	黃台生 (交通大學交通運輸研究所副教授) Tai-Sheng Huang (Associate Professor of Institute of Traffic and Transportation, National Chiao Tung University)
董事 Directors	羅孝賢 (淡江大學總務長) Shiaw-Shyan Luo (Dean of Office of General Affairs, Tamkang University)
	吳慧玲 (交通部總務司司長) Hui-Ling Wu (Director of Department of General Affairs, Ministry of Transportation and Communications)
	林麗玉 (臺北市政府交通局副局长) Li-Yu Lin (Deputy Commissioner of Department of Transportation, Taipei City Government)
	梁秀菊 (臺北市政府主計處處長) Hsiu-Chu Liang (Commissioner of Department of Budget, Accounting and Statistics, Taipei City Government)
	陳椿亮 (臺北市政府捷運工程局前局長) Richard C. L. Chen (Former Commissioner of Department of Rapid Transit Systems, Taipei City Government)
	黃昇勇 (臺北市政府警察局局長) Sheng-Yung Huang (Commissioner of Taipei City Police Department)
	蔡輝昇 (臺北市政府捷運工程局局長) Huel-Sheng Tsay (Commissioner of Department of Rapid Transit Systems, Taipei City Government)
	韓英俊 (臺北市政府人事處處長) Yieng-Chen Han (Commissioner of Personnel Department, Taipei City Government)
	鍾自強 (唐榮鐵工廠股份有限公司董事長) Zi-Qiang Zhong (Chairman of Tang Eng Iron Works Co., Ltd.)
	簡志安 (臺北捷運公司工會理事) Chih-An Chien (Council Member, Taipei Rapid Transit Corporation Union)
譚國光 (臺北捷運公司總經理) Gwa-Guang Tan (President of Taipei Rapid Transit Corporation)	
常務監察人 Standing Supervisor	陳武正 (開南大學觀光運輸學院院長) Wu-Cheng Chen (Dean of School of Tourism and Transportation, Kainan University)
監察人 Supervisors	江美桃 (新北市政府顧問) Mei-Tao Chiang (Advisor of New Taipei City Government)
	林崇一 (臺北捷運公司監察人) Chung-Yih Lin (Supervisor of Taipei Rapid Transit Corporation)
	脫宗華 (臺北捷運公司監察人) Chung-Hwa Tuo (Supervisor of Taipei Rapid Transit Corporation)

(以 2013.12.31 在任董事會成員名單為準，並依姓氏筆劃順序)
(Board members as of Dec. 31, 2013)



組織圖

Organizational Structure



人力概況 Workforce Overview

- 員工總數 Total Number of Employees : 5,380 人。
- 性別 Gender

性別 Gender	人數 Number of people	比例 Percentage
男 Male	4,344	80.74 %
女 Female	1,036	19.26 %

- 人力招募 Human Resource Recruitment :

2013 年因應新路線通車業務擴增辦理新進人員甄試，共進用 374 人。
 In response to the opening of new lines in 2013, a human resource recruitment program was implemented to recruit a total of 374 employees.

